

Road Map



Hybrid Map



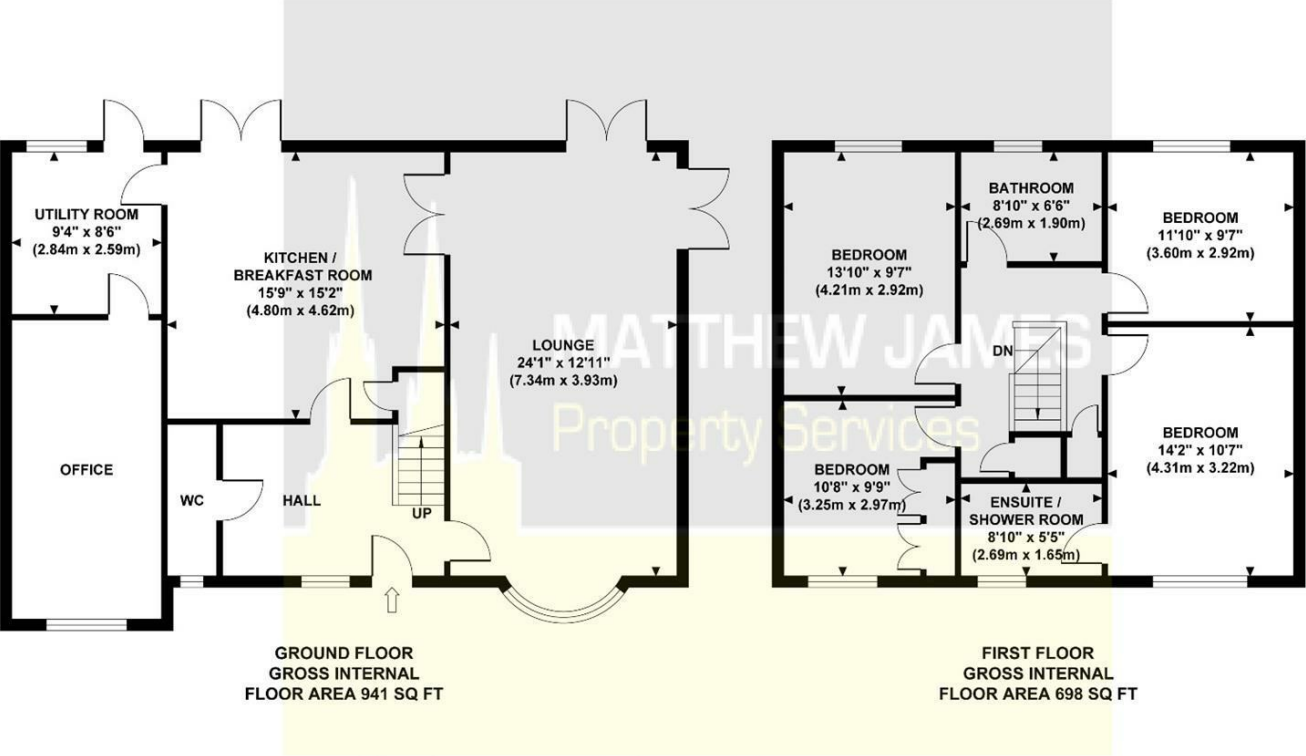
Terrain Map



Floor Plan

25 MILFORD CLOSE

Approximate Gross Internal Area 1639 sq ft / 152.26 sq m



Although every attempt has been made to ensure accuracy, all measurements are approximate and no responsibility is taken for any error, omission, or mid-statement. This floor plan is for illustrative purposes only and not to scale. Measured in accordance to RICS standards.

Viewing

Please contact us on 02477 170170 if you wish to arrange a viewing appointment for this property or require further information.

These particulars, whilst believed to be accurate are set out as a general outline only for guidance and do not constitute any part of an offer or contract. Intending purchasers should not rely on them as statements of representation of fact, but must satisfy themselves by inspection or otherwise as to their accuracy. No person in this firms employment has the authority to make or give any representation or warranty in respect of the property.

CONTACT INFORMATION

24a Warwick Row, Coventry CV1 1EY
02477 170170

info@matthewjames.uk.com
www.matthewjames.uk.com

Facebook
Twitter

MATTHEW JAMES
Property Services



35 Milford Close

Allesley Village, Coventry CV5 9BS

Offers Over £500,000

4 2 1 C



35 Milford Close

Allesley Village, Coventry CV5 9BS

Offers Over £500,000



Approach/ Driveway

Entrance Hall

12'0 x 8'6

Lounge/ Diner

24'1 x 12' 11

Kitchen Breakfast Room

15'9 x 15'2

Utility Room

9'4 x 8'6

Office

Downstairs W.C

Upstairs Landing

Master Bedroom

14'2 x 10'7

En-Suite Shower Room

8'10 x 5'5

Bedroom Two

14'2 x 10'7

Bedroom Three

13'10 x 9'7

Bedroom Four

10'8 x 9'9

Family Bathroom

8'10 x 6'3

Rear Garden

Aerial Views

